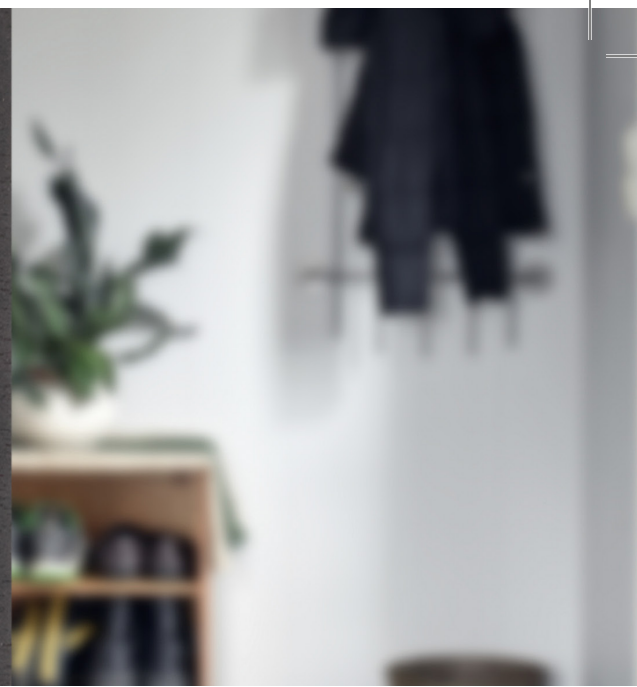


Introducing SAFELOCK DEADBOLT in MATTE BLACK

Safe Lock by Weiser was designed with one thought in mind, providing you with quality, dependability, and security. A favoured mix of styles and finishes ensure that you provide the look and feel that families want. The perfect starter home package designed to leave a lasting impression.



SAFE LOCK
by WEISER



SPECIFICATIONS

Door prep	Single & Double Cylinder: Cross Bore 2-1/8". Edge Bore 1" Latch Face 1" x 2-1/4" One Sided Deadbolt: Half Cross Bore 1-5/8" Edge Bore 1" Latch Face 1" x 2-1/4"
Backset	Adjustable to 2-3/8" or 2-3/4"
Door Thickness	1-3/8" - 1-3/4" doors standard. No thick door option
Cylinder	KW 5 pin
Faceplate	1" x 2-1/4", square corner
Strikes	1" x 2-1/4", square corner
Bolt	1" throw
Door Handing	Non-handed
ANSI/BHMA	A156.2 Grade 3
ADA	Interior turn piece meets 4.13.9 ADA requirements
UL	Meets UL 3 hour fire rating for all UL functions. ULRef # 10923
Warranty	Lifetime Mechanical and Lifetime Finish

FINISHES



3 | Brass



11P | Venetian Bronze



15 | Satin Nickel



26D | Satin Chrome



514 | Matte Black

SAFE LOCK
by **WEISER**

weiserlock.com
1-800-501-9471